



A wholly owned subsidiary of Larsen & Toubro Limited

## EXPERIENCE THE FUTURE OF VALVES



Houston, USA



Kancheepuram, India



Jamnagar, India



Al Jubail, Saudi Arabia



Coimbatore, India

Oil & Gas • Refining • Pipelines • Petrochemicals • Chemicals  
Power • Paper & Pulp • Mining & Metallurgy • Water • HVAC  
Process Industries • Utilities • Defence & Aerospace



**Flow-control Partner:** A track-record of reliability that spans 60 years



**Customer Focus:** Global sales and aftermarket network for fast response | Committed to the customer and the industry



**Approved Product Range:** Wide portfolio of proven designs | A solution for every need



**Large Installed Base:** Extensive experience in mission-critical services | Over 20 million valves supplied



**Global Manufacturing Footprint:** Facilities in USA, Saudi Arabia and India to address your requirements



**Reliable Supplier Ecosystem:** Pioneers in developing and nurturing sources for critical components



**A subsidiary of Larsen & Toubro:** Part of a global engineering and technology conglomerate

### Our major customers:

ADNOC • Chevron • ExxonMobil • IOCL • KNPC • KOC  
NTPC • ONGC • PDO • Petronas • Reliance • Saudi Aramco • Shell

EIL • Fluor • JGC • Hyundai • McDermott • Petrofac • Saipem  
Samsung • Tecnicas Reunidas • Technip Energies • Toyo

## Gate, Globe & Check Valves



**Bolted-bonnet Valves**  
API 600, API 603, API 623, API 594

#150 to 2500,  
Up to 72" (1800 mm)



**Pressure-seal Bonnet Valves**  
ASME B16.34

#600 to 4500,  
Up to 42" (1050 mm)



**Small-bore Valves**  
API 602, ASME B16.34

#150 to 4500, Up to 2" (50 mm)



A wholly owned subsidiary of Larsen & Toubro Limited

### L&T Valves Limited

L&T Campus, Manapakkam, Chennai - 600 089, INDIA

Email: [ContactUs@Lntvalves.com](mailto:ContactUs@Lntvalves.com)

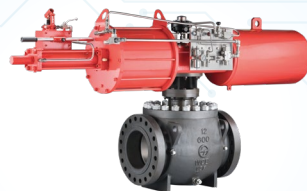
[www.Lntvalves.com](http://www.Lntvalves.com)

## Ball Valves



**Trunnion-mounted Valves - Side-entry**  
API 6D

#150 to 2500, Up to 56" (1400 mm)



**Trunnion-mounted Valves - Top-entry**  
API 6D

#150 to 1500, Up to 30" (750 mm)



**Floating Ball Valves**  
ISO 17292, API 608, API 6D

#150 to 2500, Up to 8" (200 mm)

## Plug Valves



**Double Block & Bleed Valves**  
API 6D

#150 to 600  
Up to 36" (900 mm)

## Valve Automation Solutions



High Integrity Pressure Protection  
Systems (HIPPS)

Emergency Shutdown Valves (ESDV)

Remote Operated Shutoff Valves (ROSOV)

## Digital Solutions

IoT-ready valves  
with diagnostic and  
communication capabilities

Augmented Reality  
remote collaboration and  
inspection solution

Digital traceability  
solution powered by  
RFID technology

## Butterfly Valves



**Triple-offset  
Butterfly Valves**  
API 609 CatB

#150 to 1500,  
Up to 100"  
(2500 mm)



**Fabricated Steel Valves**  
AWWA C 504, C 516, EN 593

PN6, PN10 & PN16  
Up to 132" (3300 mm)



**Elastomer-lined Valves**  
API 609 CatA, EN 593

PN10/16/25, #150  
Up to 36" (900 mm)

Registered Office:

L&T House, N. M. Marg, Ballard Estate, Mumbai - 400 001, INDIA

Publication No. ValvesLC/1022 © L&T Valves 2022.

As we continuously endeavour to improve our products, the data given herein is subject to change. Please refer [www.Lntvalves.com](http://www.Lntvalves.com) for the latest publication.