

Wide Variety of Cryogenic Solutions



Gate, Globe & Check Valves
Ball Valves
Triple-offest Butterfly Valves



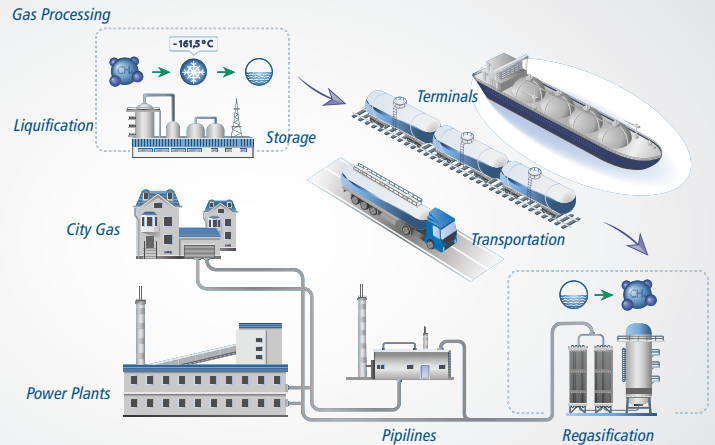
L&T Valves manufactures mission-critical flow-control solutions.

The valves are approved and accepted by the global majors in the energy industry.

L&T Valves operates manufacturing facilities in the USA, Saudi Arabia and India. In 2021, the company celebrates its 60th anniversary.



The cryogenic range addresses requirements of the entire LNG chain from gas processing to city gas distribution.



STANDARDS COMPLIANCE

Design: BS 6364, ISO 21011, MSS SP 134

Fugitive Emission: ISO 15848, API 624, API 641

Fire Safety: API 607, API 6FA, ISO 10497

SIL-3, IEC 61508

OPTIONAL TESTS

EN 12567

Annexure A (Thermal Shock Test)

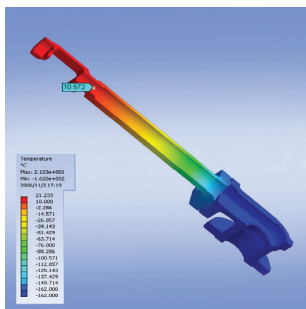
Annexure B (Endurance Test)



The in-house cryogenic test facility at L&T Valves is one of the largest in the world, built to test valves of sizes up to 60".



The cryogenic range is manufactured using state-of-the-art CNC machining centres and automated welding machines.



L&T Valves offers reliable service support for installation and commissioning, valve repairs and upgrades.

Salient Features & Benefits:

Ideal extension column height ensures unmatched sealing and optimum valve size.

Symmetrical design and thermally stabilized body and obturator ensure endurance and dimensional stability during temperature cycles.

Controlled chemistry minimises distortion at cryogenic temperatures.

To enhance safety and performance, the valves are assembled and tested in clean environments.

The acceptance criteria followed are significantly stringent compared to the leakage rates allowed as per BS 6364

L&T Valves cryogenic range delivers high performance even when exposed to transient thermal stresses, thermal expansion of LNG and the icing of sealing components - without compromising fire safety and fugitive emission requirements.

CRYOGENIC PRODUCT RANGE

- Cast Steel Gate, Globe & Check Valves – Sizes up 54" / ASME Classes up to 2500
- Forged Steel Gate, Globe & Check Valves – Sizes up 2" / ASME Classes up to 800
- Trunnion-mounted Ball Valves – Sizes up to 24" / Classes up to 2500
- Floating Ball Valves – Sizes up to 4" / ASME classes up to 800
- Triple-offset Butterfly Valves – Sizes up to 40" / ASME classes up to 600

GLOBAL CUSTOMER BASE

The valves are in service at some of the largest LNG complexes around the world - and the huge installed base bears testimony to the performance and versatility of the range.



A wholly owned subsidiary of Larsen & Toubro Limited

L&T Valves Limited

Mount-Poonamallee Road, Manapakkam, Chennai 600 089, INDIA
 Tel.: 1800 2094 545 ContactUs@Lntvalves.com www.Lntvalves.com
 CIN: U74999MH1961PLC012188

Registered Office:

L&T House, N. M. Marg
 Ballard Estate
 Mumbai 400 001, INDIA