



# ***Control Valves***

Globe, Butterfly, Segmented Ball & Eccentric Plug Valves  
Desuperheater & Steam Conditioning Valves

L&T Valves is a wholly-owned subsidiary of Larsen & Toubro, a leading engineering, construction, manufacturing and services conglomerate. The company, trusted by the industry for over five decades, offers innovative products and solutions that enhance safety, reliability and performance in flow-control systems across the globe.

## Control Valves

L&T Valves offers a comprehensive range of control valves and allied equipment manufactured by MASCOT Valves.

The valves find application in industries such as Oil & Gas, Power, Petrochemical, Chemicals, Mining and Paper & Pulp. LTV-Mascot products are offered with IBR Certification, CE Mark and ATEX certification.

### Product Range:

- Globe Valve
- Butterfly Valve
- Vee-Notch Ball Valve
- Full Bore Ball Valve
- Eccentric Plug Valve
- Flush Bottom
- Mini Desuperheater
- Variable Spray Desuperheater
- Steam Conditioning Valves

Custom-engineered solutions and specialty valves for Severe Services are also offered.



### Globe Valve (Size : ½" to 36")

**Body Type:** 2 Way/ 3 Way/ Angle/ Jacketed  
**Body Materials:** All Castable Materials. Forged available up to 4" in any class and higher sizes specifically for #2500 and higher.  
**End Connections:** Flanged (Integral & Separable), Screwed, Butt-weld and Socket-weld  
**Bonnet:** Standard, Extended, Cryogenic & Bellow Sealed  
**Guiding:** 2 - top heavy duty stem guides  
**Gland Packing:** PTFE, Braided PTFE, Grafoil, Fugitive Emission, Vacuum  
**Gaskets:** PTFE, Spiral Grafoil, Glass filled SS

**Seat Ring:** Clamped-in self aligned  
**Plug:** Line seat contact area, large diameter stem is an integral part  
**Characteristics:** Equal Percentage, Linear and Quick-open (On - Off)  
**Rangeability:** 50:1  
**Special Trims:** CavFlo, MegaFlo, dB Plates, VCFlo  
**Actuator:** Spring Cylinder Linear, Fully Field Reversible  
**Air pressure:** 2.0 to 10.0 Bar  
**Shut off class:** With Metal seat - ANSI IV or V and replaceable Soft seat - ANSI VI



### Butterfly Valve (Size : 2" to 72")

**Body Type:** One Piece Straight Through/ Jacketed  
**Body Materials:** All Castable Materials  
**End Connections:** Wafer, Semi-Lugged, Full Lugged & Flanged  
**Bonnet:** Standard, Extended & Cryogenic  
**Gland Packing:** PTFE, Braided PTFE, Grafoil, Vacuum  
**Gaskets:** PTFE, Spiral Grafoil, Glass filled SS  
**Seat Ring:** Clamped-in self aligned

**Disc:** Double Eccentric Cammed  
**Shaft:** Splined - No transmission loss or dead band Stainless Steel/ 17-4PH  
**Characteristics:** Equal Percentage, Linear and Quick-open (On - Off)  
**Actuator:** Spring Cylinder Rotary, Fully Field Reversible  
**Air pressure:** 2.0 to 10.0 Bar  
**Shut off class:** With Metal seat - ANSI IV and replaceable Soft seat - ANSI VI



### Vee-Notch Ball Valve (Size : 1" to 24")

**Body Type:** One Piece Straight Through/ Jacketed  
**Body Materials:** All Castable Materials  
**End Connections:** Wafer as well as Flanged (Integral & Separable Flange)  
**Bonnet:** Standard, Extended & Cryogenic  
**Gland Packing:** PTFE, Braided PTFE, Grafoil, Vacuum  
**Gaskets:** PTFE, Spiral Grafoil, Glass filled SS  
**Seat Ring:** Clamped-in self Aligned Bi-directional Seal

**Ball:** Segmented V - Notch Ball  
**Shaft:** Splined - No transmission loss or dead band Stainless Steel/ 17 - 4PH  
**Characteristics:** Equal Percentage, Linear and Quick-open (On - Off)  
**Actuator:** Spring Cylinder Rotary, Fully Field Reversible  
**Air pressure:** 2.0 to 10.0 Bar  
**Shut off class:** With Metal seat - ANSI IV and replaceable Soft seat - ANSI VI



### Full Bore Ball Valve (Size : 1" to 24")

**Body Type:** Two Piece/ Three Piece/ Floating/ Trunnion-mounted/ Jacketed  
**Body Materials:** All Castable Materials  
**End Connections:** Flanged, Socket & Butt Welded  
**Bonnet:** Standard, Extended & Cryogenic  
**Gland Packing:** PTFE, Braided PTFE, Grafoil, Vacuum  
**Gaskets:** PTFE, Spiral Grafoil, Glass filled SS

**Shaft:** Splined - No transmission loss or dead band Stainless Steel/ 17 - 4PH  
**Characteristics:** On - Off/ Approximate throttling with Positioner  
**Actuator:** Pneumatic Spring Rotary, Fully field reversible  
**Supply:** Air pressure 2.0 to 10.0 Bar  
**Shut off class:** ANSI VI with Teflon Seat, ANSI IV with Metal Seat



### Eccentric Plug Valve (Size : 1" to 24")

**Body Type:** Straight Through/ Jacketed (Also know as "Rotary Globe Type)  
**Body Materials:** All Castable Materials  
**End Connections:** Flanged, Wafer  
**Bonnet:** Standard, Extended & Cryogenic  
**Gland Packing:** PTFE, Braided PTFE, Grafoil, Vacuum  
**Gaskets:** PTFE, Spiral Grafoil, Glass filled SS  
**Seat Ring:** Clamped - in, Self Aligned with Reduced CV options

**Plug:** SS 304, 316, 304L, 316L, Hastelloy C and other Castable materials  
**Shaft:** Splined - No transmission loss or dead band Stainless Steel/ 17 - 4PH  
**Characteristics:** Equal Percentage, Linear  
**Actuator:** Pneumatic Spring Rotary, Fully field reversible  
**Supply:** Air pressure 2.0 to 10.0 Bar  
**Shut off class:** ANSI VI with Teflon Seat, ANSI IV with Metal Seat



### Flush Bottom

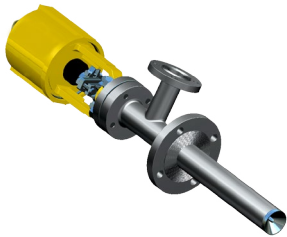
**Body Type:** 90°/ 120°/ 135° Jacketed  
**Body Materials:** All Castable Materials  
**End Connections:** As required  
**Bonnet:** Standard Bolted  
**Seat:** Replaceable  
**Plug:** Opens inside the Vessel or Opens inside the Valve Provision for (RTD) Temperature Sensing

**Characteristics:** Equal Percentage, Linear and On - Off  
**Actuator:** Spring Cylinder, Fully field reversible  
**Air pressure:** 2.0 to 10.0 Bar



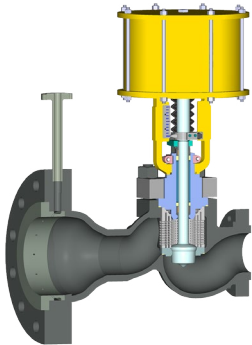
### Mini Desuperheater

**Available sizes:** 1" and Above as per Customer's Steam Line Size  
**Available rating:** #150 to 4500  
**Special feature:** Stainless Steel sleeve acts as a thermal liner  
**Turn-Down Ratio:** 4:1



### Variable Spray Desuperheater

**Available Sizes:** ½" to 4.0" water inlet size  
**Rating:** #150 to 4500  
**Spray Method:** Swirling hollow cone pattern of atomized water at the injection point  
**Mounting Type:** Probe at 45° or on long radius bend  
**Turn-Down Ratio:** 40:1



### Steam Conditioning Valves

**Available Sizes:** ½" to 36"  
**Rating:** #150 to 4500  
**Spray Method:** Small Jets of spray through sleeve at the outlet where the steam is highly turbulent for ultimate mixing  
**Special Feature:** No special trim/expertise needed as MASCOT Steam Conditioning Valves use standard MASCOT Globe control valve components. Water is sprayed at the outlet hence protecting the valve belly from pitting or thermal stresses  
**Turn-Down Ratio:** 60:1



#### L&T Valves Limited

Mount - Poonamallee Road, Manapakkam, Chennai 600 089, INDIA  
Tel.: 1800 2094 545 ContactUs@Lntvalves.com www.Lntvalves.com  
CIN: U74999MH1961PLC012188

Publication Number: VF102/0119. As we continuously endeavour to improve our products, the data given herein is subject to change. Please refer [www.Lntvalves.com](http://www.Lntvalves.com) for the latest publication.

Registered Office:  
L&T House, N. M. Marg  
Ballard Estate  
Mumbai 400 001, INDIA